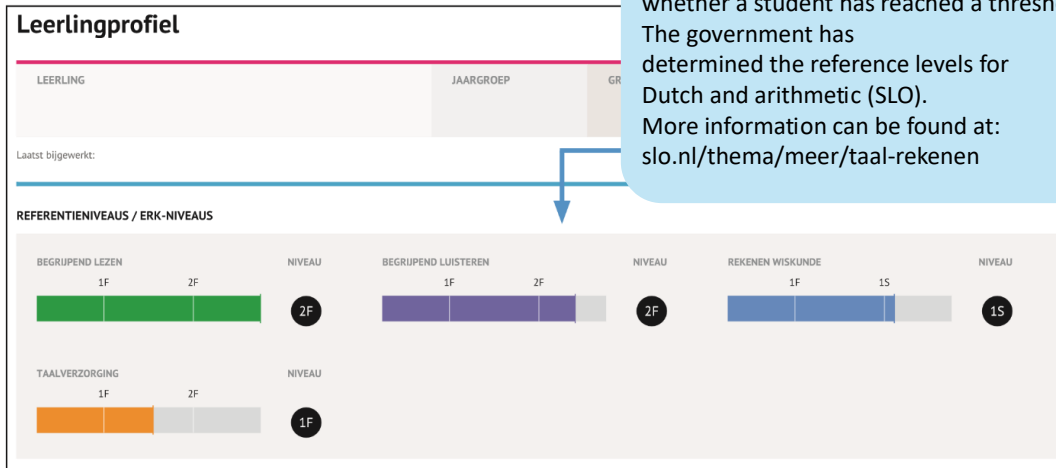


Student profile reader for parents

The "Leerling in Beeld" report charts your child's progress. It never provides a complete picture of your child; it's just one piece of the puzzle. Below, we explain how to read the report. Pay particular attention to your child's progress (growth lines) and use the report as a support tool in the conversation with the teacher about how their learning is going, what's going well, and where there are areas for improvement.

Reference levels are shown from E6 onwards. A reference level indicates whether a student has reached a threshold level. The government has determined the reference levels for Dutch and arithmetic (SLO). More information can be found at: slo.nl/thema/meer/taal-rekenen

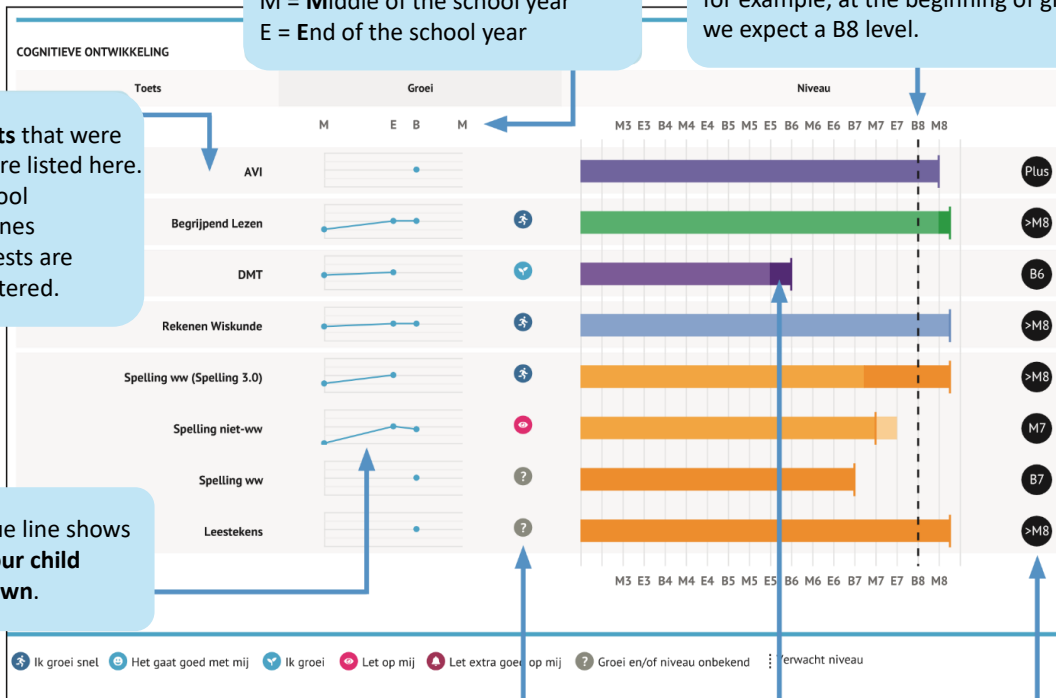


The abbreviations indicate the time of the test administration.
B = Beginning of the school year
M = Middle of the school year
E = End of the school year

The **dotted line** shows the expected level during this assessment period: for example, at the beginning of group 8, we expect a B8 level.

The **parts** that were tested are listed here. The school determines which tests are administered.

This blue line shows **how your child has grown**.



The **growth symbol** shows how your child has grown between the previous test and this test.

A **dark-colored** area shows growth between the last two sets of measurements. A **light-colored** area indicates your child has regressed.

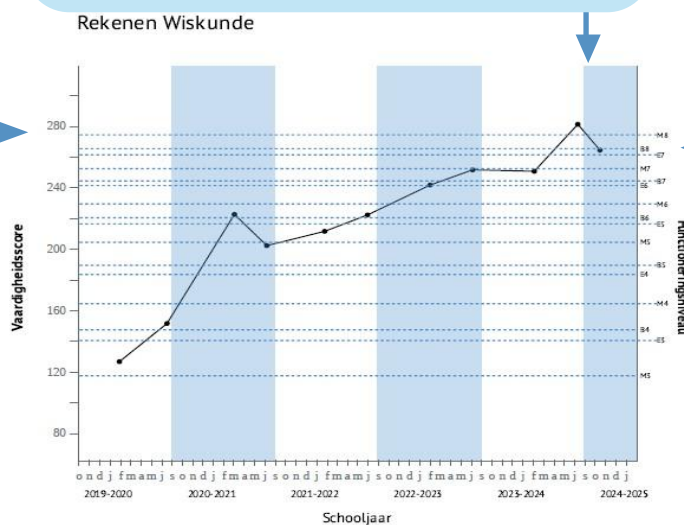
Here you can see the **level of functioning** that your child currently masters. (M3 to E8)

Reading guide graphs Cito Leerling in Beeld

In addition to the student profile from Cito Leerling in Beeld, we've also chosen to provide your child with graphs. These graphs show the growth in each subject area over the years.

The dot in the graph indicates your child's **skill score** on that assessment and the corresponding **level of functioning**. An upward trend in the graph indicates that your child's skill score has improved and therefore their functioning level has increased compared to the previous assessment.

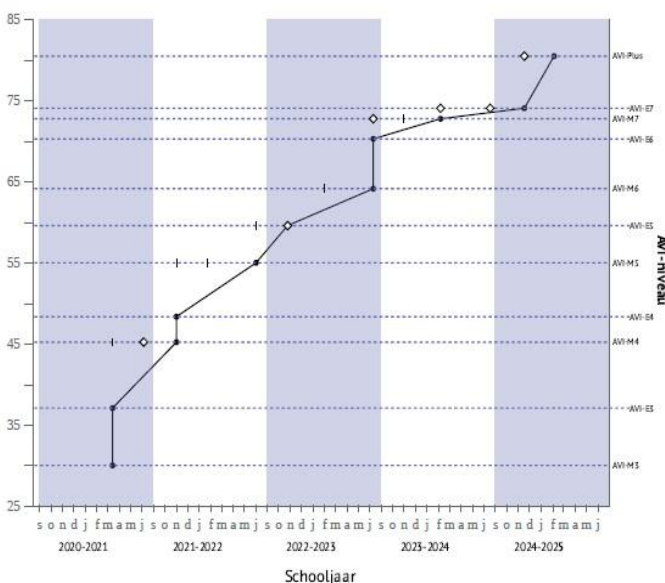
Here you can see the **skill scores**. To determine your child's functioning level, Cito converts your child's raw test scores into skill scores. This makes it possible to compare tests that measure the same skill.



Here you can see the different **functioning levels**. M5 indicates that your child has achieved the level we expect for middle (M) group 5.

The school year and its associated months.

AVI



The AVI chart looks slightly different. The dot means that your child has achieved this **AVI level**, a diamond in the chart indicates that your child is reading this card at the instruction level (the practice level), and the vertical line in the AVI chart means that this AVI card has not been achieved.